

Smart Popup
Roller transfer

Made in Sweden since 1963

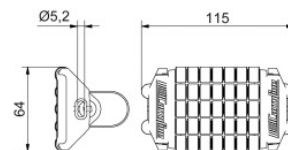


Why choose the smart Popup transition from Carryline?

- ✓ Developed with safety as the first priority
- ✓ Magnets hold it in place, if something gets stuck, it pops up
- ✓ With sensor on, you get a signal if something gets stuck
- ✓ Safer operation and increased lifespan
- ✓ Can be adapted to all Carryline conveyors

Roller transfer

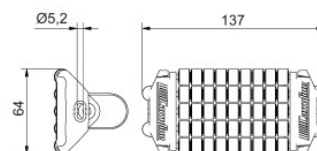
Roller transfer for S620
Acetal, anodized aluminum, stainless
and zinc plated steel
Weight 175 g



Part no. 900-7400

Roller transfer

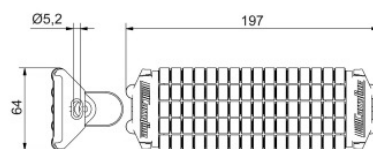
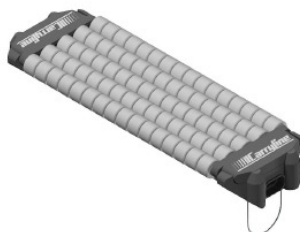
Roller transfer for S830
Acetal, anodized aluminum, stainless
and zinc plated steel
Weight 211 g



Part no. 900-7410

Roller transfer

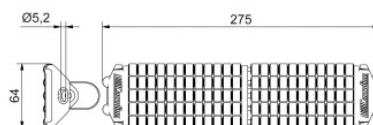
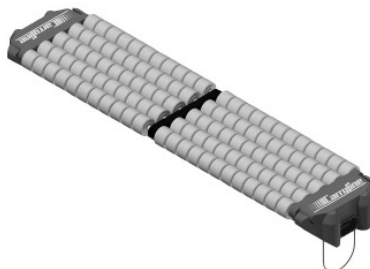
Roller transfer for S140
Acetal, anodized aluminum, stainless
and zinc plated steel
Weight 320 g



Part no. 900-7420

Roller transfer

Roller transfer for S220
Acetal, anodized aluminum, stainless
and zinc plated steel
Weight 465 g

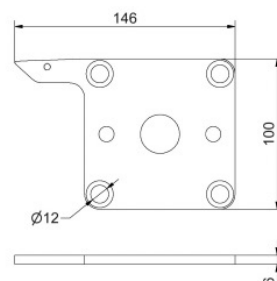
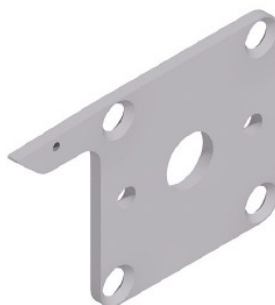


Part no. 900-7430

Mounting plate

Mounting plate with bracket for roller transfer for S830, S140 and S220
Anodized aluminum
Weight 150 g

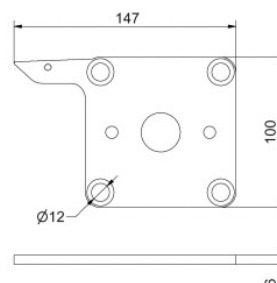
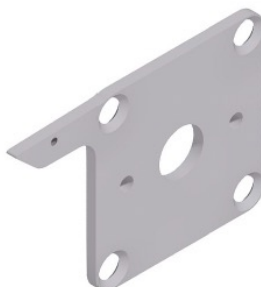
Part no. 900-7300



Mounting plate

Mounting plate with bracket for roller transfer for S620
Anodized aluminum
Weight 150 g

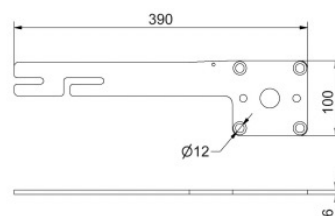
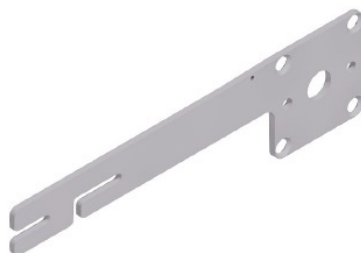
Part no. 900-7305



Mounting plate

Mounting plate with connecting strip and bracket for roller transfer
For S830, S140 and S220
Anodized aluminum
Weight 340 g

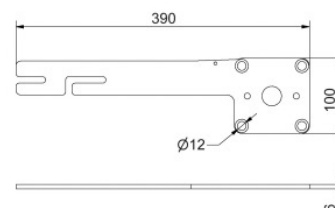
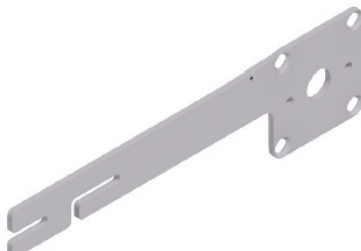
Part no. 900-7310



Mounting plate

Mounting plate with connecting strip and bracket for roller transfer for S620
Anodized aluminum
Weight 340 g

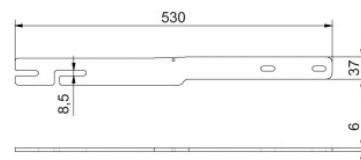
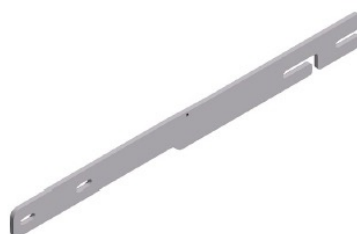
Part no. 900-7315



Connecting strip

Connecting strip between conveyors
with bracket for roller transfer
Anodized aluminum
Weight 335 g

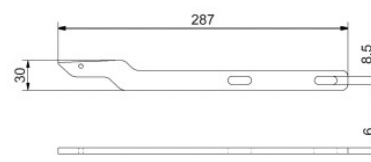
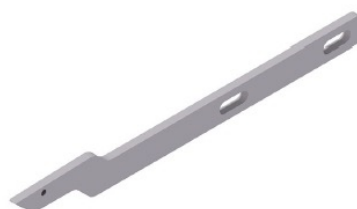
Part no. 900-7320



Bracket

Bracket for drive unit with roller
transfer
Anodized aluminum
Weight 85 g

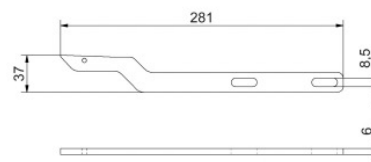
Part no. 900-7325



Bracket

Bracket for idler unit with roller transfer
Anodized aluminum
Weight 80 g

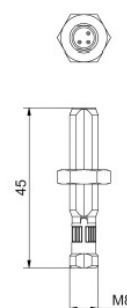
Part no. 900-7330



Proximity switch

Proximity switch for roller transfer
Electrical connection M8
Zinc plated steel

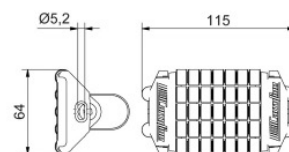
Part no. 900-7450



Roller transfer

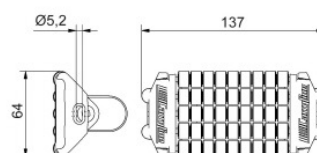
Roller transfer for S520
Acetal and stainless steel

Part no. 500-7400

**Roller transfer**

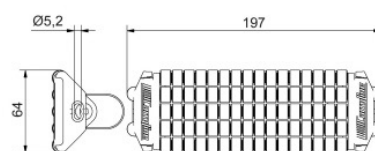
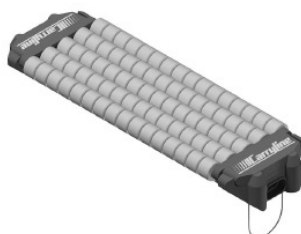
Roller transfer for S530
Acetal and stainless steel

Part no. 500-7410

**Roller transfer**

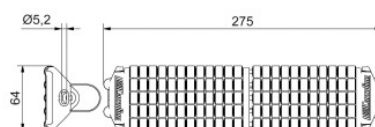
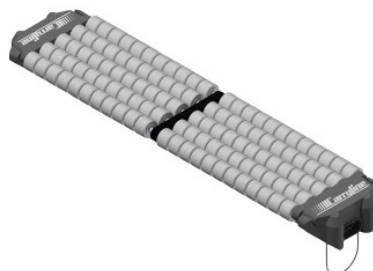
Roller transfer for S540
Acetal and stainless steel

Part no. 500-7420

**Roller transfer**

Roller transfer for S560
Acetal and stainless steel

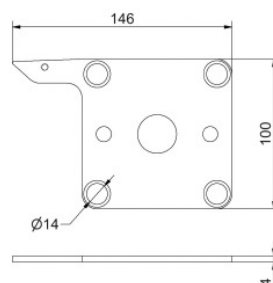
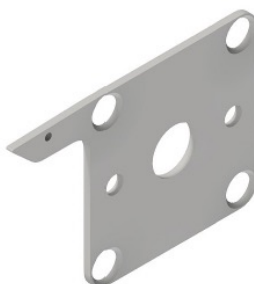
Part no. 500-7430



Mounting plate

Mounting plate with bracket for roller transfer for S530, S540 and S560
Stainless steel
Weight 295 g

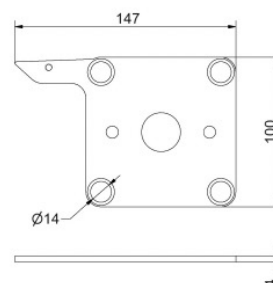
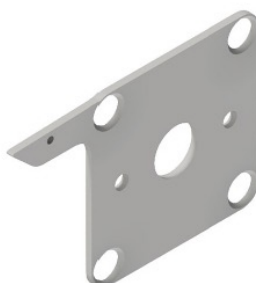
Part no. 500-7300



Mounting plate

Mounting plate with bracket for roller transfer for S620
Stainless steel
Weight 295 g

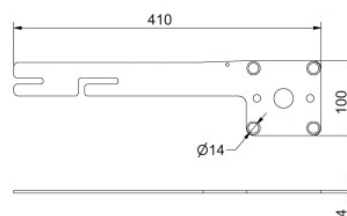
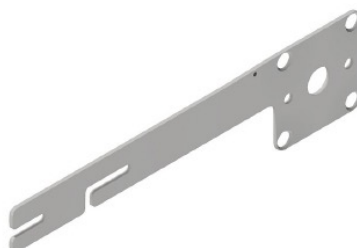
Part no. 500-7305



Mounting plate

Mounting plate with connecting strip and bracket for roller transfer
For S530, S540 and S560
Stainless steel
Weight 700 g

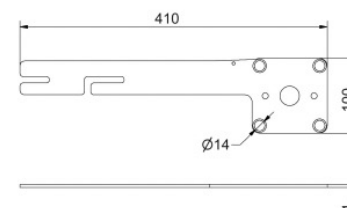
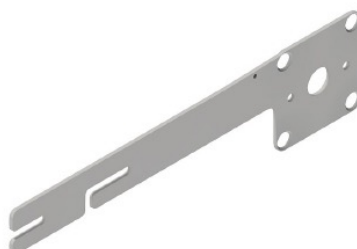
Part no. 500-7310



Mounting plate

Mounting plate with connecting strip and bracket for roller transfer for S520
Stainless steel
Weight 700 g

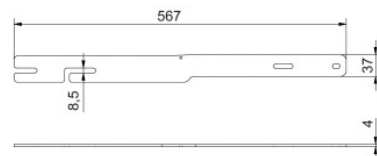
Part no. 500-7315



Connecting strip

Connecting strip between conveyors
with bracket for roller transfer
Stainless steel
Weight 713 g

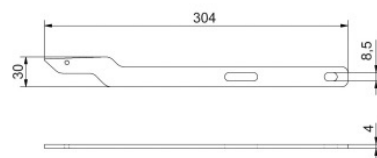
Part no. 500-7320



Bracket

Bracket for drive unit with roller
transfer
Stainless steel
Weight 178 g

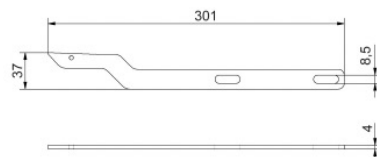
Part no. 500-7325



Bracket

Bracket for idler unit with roller transfer
Stainless steel
Weight 171 g

Part no. 500-7330



Proximity switch

Proximity switch for roller transfer
Electrical connection M8
Stainless steel

Part no. 500-7450

