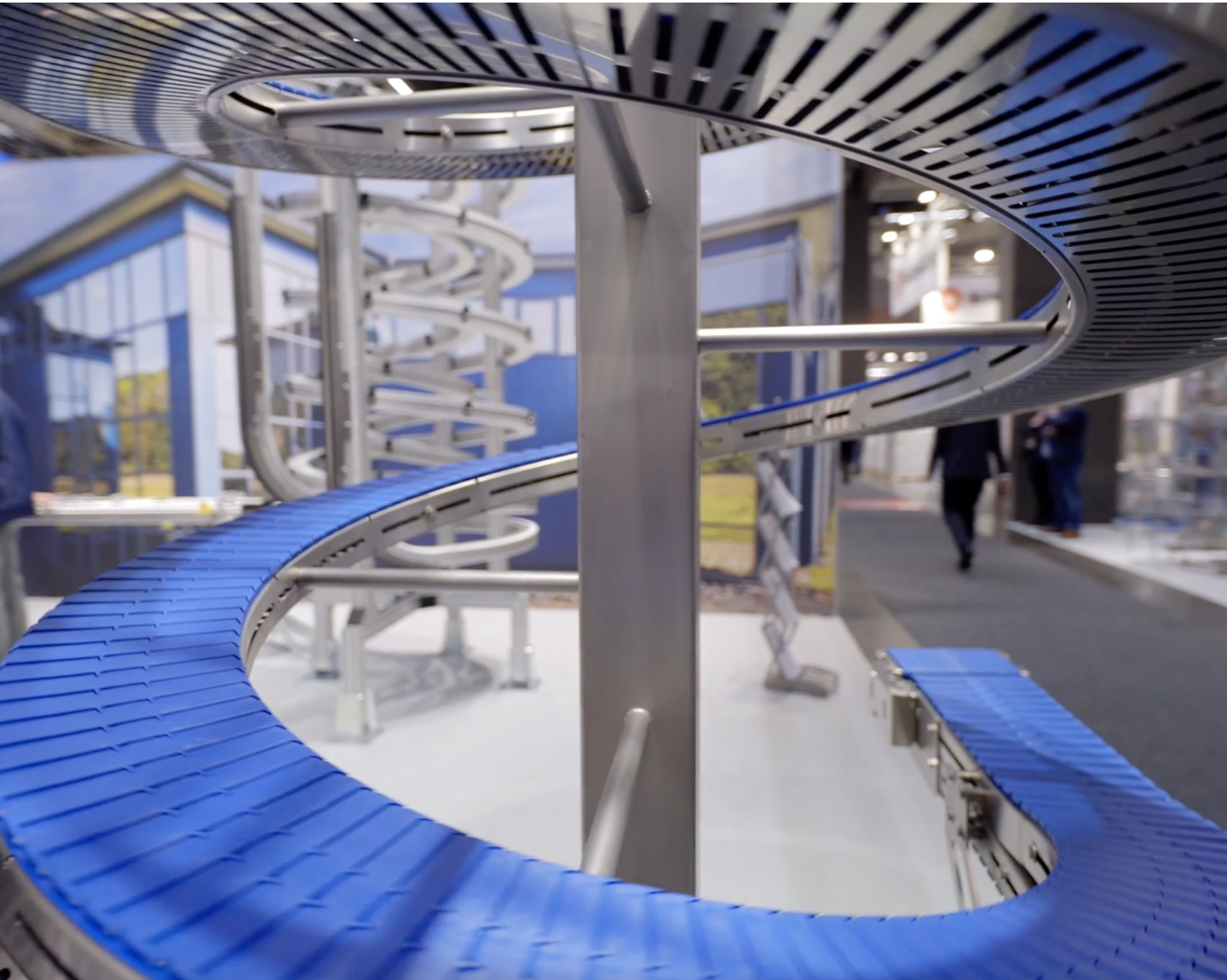


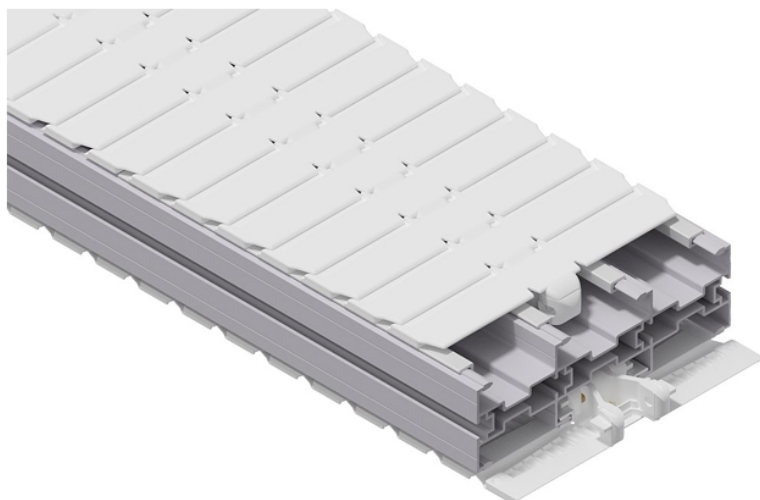
Overlap Conveyor chain

Made in Sweden since 1963



## **Why choose overlap conveyor chains from Carryline?**

- ✓ Smooth overlapping design with high safety level
- ✓ Ensures stable and precise handling of products
- ✓ Durable and flexible
- ✓ Ultimate quality for reduced wear
- ✓ Safer operation and increased service life
- ✓ Perfect for high demands on precision and reliability
- ✓ Fully compatible with old S220 conveyors



Technical specification S220	
Width of chain	220 mm
Chain pitch	38 mm
Width conveyor profile	224 mm
Height conveyor	80 mm
Radius conveyor chain on the drive and idler unit	70 mm
Max. permitted traction on the conveyor chain	1250 N
Weight conveyor	≈ 11,5 kg/m **
Recommended maximum load on conveyor	≈ 200 kg *
Recommended maximum load	≈ 20 kg/m *
Recommended maximum length of conveyor	≈ 20 m *
Recommended maximum speed	40 m/min
Minimum radius on horizontal bend	R 600 mm
Vertical bend radius	R 400 mm and R 860 mm
Motor	0,18 - 0,55 kW
Noise level	< 70 dB (A)
Chain material	Acetal
Conveyor profile material	Anodized aluminum
* Recommended maximum length depends on the design, load and number of bends.	
** The weight of the conveyor depends on which type of chain, guide rail and guide rail bracket.	

## Conveyor chain S220

Acetal, nylon and stainless steel.

Standard version top flights are made of white acetal which is food approved

Allowed traction force 1250 N.

Specified dimensions may vary up to 2%.

On request, some chains and top flight can be delivered in non-standard material.

Enter the following additional letter.

**L** = Low friction

**F** = Flocked

Order example 220-2000L

## Overlap chain

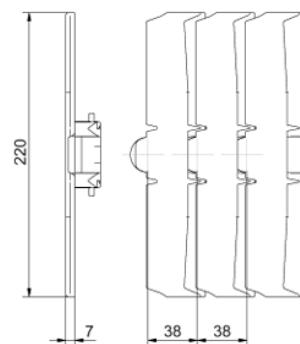
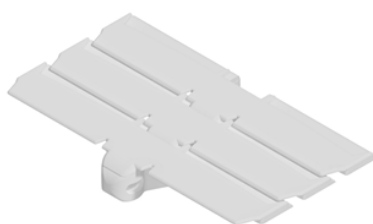
Slat standard chain for S220 and S560

Weight 2340 g/m

Qty 27 pcs/m

**Part no. 220-2300**

**Part no. 220-2300-BLUE**



Top flight for overlap chain

Weight 54 g

**Part no. 220-2301**

**Part no. 220-2301-BLUE**

## Overlap chain friction

Standard chain with friction top flight

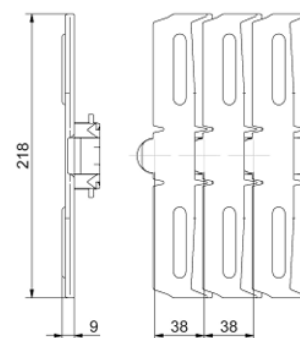
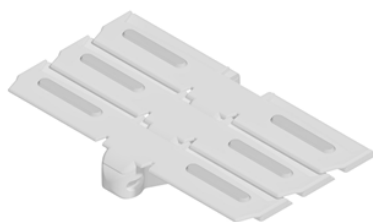
for S220 and S560

Weight 2420 g/m

Qty 27 pcs/m

**Part no. 220-2310**

**Part no. 220-2310-BLUE**

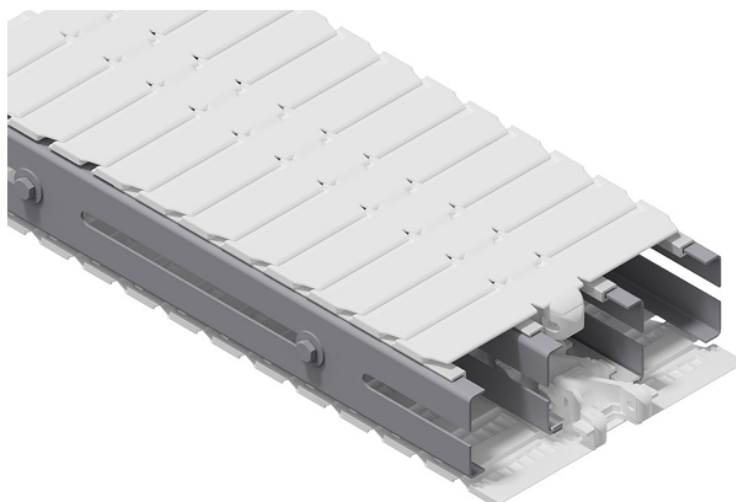


Top flight for friction overlap chain

Weight 57 g

**Part no. 220-2311**

**Part no. 220-2311-BLUE**



Technical specification S560	
Width of chain	220 mm
Chain pitch	38 mm
Width conveyor profile	224 mm
Height conveyor	80 mm
Radius conveyor chain on the drive and idler unit	70 mm
Max. permitted traction on the conveyor chain	1250 N
Weight conveyor	≈ 11,5 kg/m **
Recommended maximum load on conveyor	≈ 200 kg *
Recommended maximum load	≈ 20 kg/m *
Recommended maximum length of conveyor	≈ 20 m *
Recommended maximum speed	40 m/min
Minimum radius on horizontal bend	R 600 mm
Vertical bend radius	R 400 mm and R 860 mm
Motor	0,18 - 0,55 kW
Noise level	< 70 dB (A)
Chain material	Acetal
Conveyor profile material	Stainless steel
* Recommended maximum length depends on the design, load and number of bends.	
** The weight of the conveyor depends on which type of chain, guide rail and guide rail bracket.	

## Conveyor chain S220

Acetal, nylon and stainless steel.

Standard version top flights are made of white acetal which is food approved

Allowed traction force 1250 N.

Specified dimensions may vary up to 2%.

On request, some chains and top flight can be delivered in non-standard material.

Enter the following additional letter.

**L** = Low friction

**F** = Flocked

Order example 220-2000L

## Overlap chain

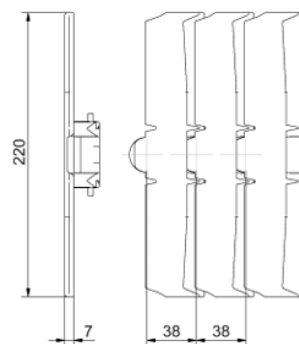
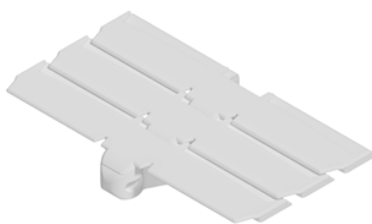
Slat standard chain for S220 and S560

Weight 2340 g/m

Qty 27 pcs/m

**Part no. 220-2300**

**Part no. 220-2300-BLUE**



Top flight for overlap chain

Weight 54 g

**Part no. 220-2301**

**Part no. 220-2301-BLUE**

## Overlap chain friction

Standard chain with friction top flight

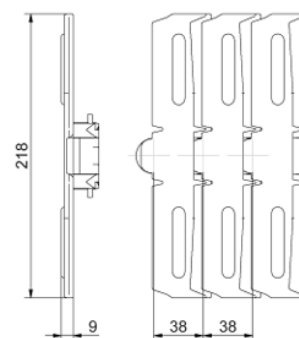
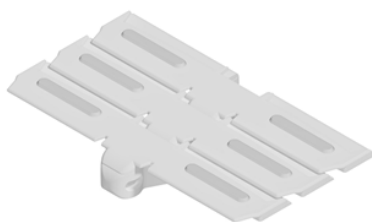
for S220 and S560

Weight 2420 g/m

Qty 27 pcs/m

**Part no. 220-2310**

**Part no. 220-2310-BLUE**



Top flight for friction overlap chain

Weight 57 g

**Part no. 220-2311**

**Part no. 220-2311-BLUE**